

# Sugarcane Bagasse Takeaway Packaging



- ✓ Reduce Carbon Emissions
- ✓ Sturdy Structure & Stacking Stability
- ✓ Waterproof with Film (PLA / PP / PE / CPET)
- ✓ Microwaveable & Refrigerable (-20°C~120°C / -4°F~248°F)



**PFAS FREE**

Our PFAS FREE products (Per and polyfluoroalkyl substances free) are harmless to human body and safe for users' health.



| Item         | Size(mm)     | Packing(ctn) |
|--------------|--------------|--------------|
| CR7510 Lid   | 228*165*25.5 | 300 pcs      |
| CR750 Base   | 223*160*40.5 | 300 pcs      |
| CR900-2 Base | 223*160*47.5 | 300 pcs      |
| CR1000 Base  | 223*160*50   | 300 pcs      |
| CR1400 Base  | 223*159*68.5 | 300 pcs      |

| Item          | Size(mm)         | Packing(ctn) |
|---------------|------------------|--------------|
| CS1000 Lid    | 208*208*30.5     | 300 pcs      |
| CS1000 Base   | 203*203*46.5     | 300 pcs      |
| CS1000-2 Base | 203*203*46.5     | 300 pcs      |
| CS1000-3 Base | 203*203*46.5     | 300 pcs      |
| CS1400 Lid    | 231.5*231.5*30.5 | 300 pcs      |
| CS1400 Base   | 228*228*45       | 300 pcs      |
| CS1400-3 Base | 228*228*45       | 300 pcs      |





# Natural Sugarcane Bagasse Food Boxes

- Bagasse material is 100% environmental friendly and helps reduce carbon emissions.



| Item |  | Size(mm) | Packing(ctn) |
|------|--|----------|--------------|
|------|--|----------|--------------|

|        |      |           |         |
|--------|------|-----------|---------|
| CR2432 | Lid  | Φ212*25.5 | 300 pcs |
| CR24   | Base | Φ207.5*45 | 300 pcs |
| CR32   | Base | Φ207.5*59 | 300 pcs |
| CR42   | Base | Φ208*72   | 300 pcs |



| Item |  | Size(mm) | Packing(ctn) |
|------|--|----------|--------------|
|------|--|----------|--------------|

|        |      |              |         |
|--------|------|--------------|---------|
| CP1632 | Lid  | 185*185*31.6 | 300 pcs |
| CP16   | Base | 178*178*37.5 | 300 pcs |
| CP24   | Base | 178*178*49.5 | 300 pcs |
| CP32   | Base | 178*178*61.5 | 300 pcs |



| Item |  | Size(mm) | Packing(ctn) |
|------|--|----------|--------------|
|------|--|----------|--------------|

|        |      |                |         |
|--------|------|----------------|---------|
| CB2448 | Lid  | 220*220*22     | 300 pcs |
| CB24   | Base | 215.5*215.5*38 | 300 pcs |
| CB32   | Base | 215.5*215.5*47 | 300 pcs |
| CB48   | Base | 215.5*215.5*61 | 300 pcs |





| Item   |      | Size(mm)     | Packing(ctn) |
|--------|------|--------------|--------------|
| CJ305  | Lid  | 228*165*26   | 300 pcs      |
|        | Base | 238*190*35   | 300 pcs      |
| CJ3062 | Lid  | 203*203*46.5 | 300 pcs      |
|        | Base | 268*208*36   | 300 pcs      |



| Item  |      | Size(mm)         | Packing(ctn) |
|-------|------|------------------|--------------|
| BP-01 | Lid  | 166.5*91.8*30.5  | 600 pcs      |
|       | Base | 163.8*88.8*21    | 600 pcs      |
| BP-02 | Lid  | 225*95*30        | 600 pcs      |
|       | Base | 221*92*22        | 600 pcs      |
| BP-03 | Lid  | 168*118*30       | 600 pcs      |
|       | Base | 165*115*19.5     | 600 pcs      |
| BP-05 | Lid  | 187.6*130.5*30   | 600 pcs      |
|       | Base | 184.5*128*20     | 600 pcs      |
| BP-07 | Lid  | 217.4*137.4*30   | 600 pcs      |
|       | Base | 215*135*20       | 600 pcs      |
| BP-09 | Lid  | 240.5*148*26.5   | 300 pcs      |
|       | Base | 238.5*145.5*23.7 | 300 pcs      |

| Item   |      | Size(mm)     | Packing(ctn) |
|--------|------|--------------|--------------|
| PR500  | Lid  | 184*129*30   | 300 pcs      |
|        | Base | 175*120*37   | 300 pcs      |
| PR750  | Lid  | 214*159*30.5 | 300 pcs      |
|        | Base | 205*150*37   | 300 pcs      |
| PR1000 | Lid  | 214*159*30.5 | 300 pcs      |
|        | Base | 205*150*45   | 300 pcs      |



# New Arrivals



| Item  |      | Size(mm)       | Packing(ctn) |
|-------|------|----------------|--------------|
| BP-30 | Lid  | 234.5*125.5*46 | 300 pcs      |
|       | Base | 230*121*19     | 300 pcs      |
| BP-40 | Lid  | 187.5*187.5*46 | 300 pcs      |
|       | Base | 183.3*183.3*19 | 300 pcs      |



| Item   |      | Size(mm)     | Capacity     |
|--------|------|--------------|--------------|
| CS-300 | Lid  | 142*142*20   | -            |
|        | Base | 135*135*50.7 | 300ml / 10oz |
| CS-500 | Base | 135*135*66.6 | 500ml / 16oz |



| Item     |      | Size(mm)       | Capacity      |
|----------|------|----------------|---------------|
| CBH-750  | Lid  | 204*218*20     | -             |
|          | Base | 212.1*196*68.4 | 750ml / 24oz  |
| CBH-1000 | Base | 212.1*196*52.9 | 1000ml / 32oz |



| Item   |      | Size(mm)    | Capacity      |
|--------|------|-------------|---------------|
| CH550  | Lid  | Φ160*20     | -             |
|        | Base | Φ158*21.5   | 550ml / 18oz  |
| CH700  | Lid  | Φ174*20     | -             |
|        | Base | Φ168.5*65.7 | 700ml / 24oz  |
| CH1000 | Lid  | Φ185*20     | -             |
|        | Base | Φ180*75.7   | 1000ml / 32oz |



| Item   |      | Size(mm)   | Capacity      |
|--------|------|------------|---------------|
| KS1316 | Base | 130*130*47 | 500ml / 16oz  |
| KS1320 | Base | 130*130*60 | 650ml / 20oz  |
| KS1732 | Base | 175*175*50 | 980ml / 32oz  |
| KS1742 | Base | 175*175*65 | 1320ml / 42oz |

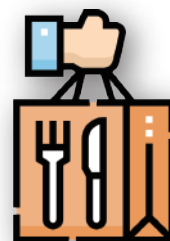




# Kraft Paper Food Bowl

- Our Kraft Paper products are also available with PFAS Free and oil resistance between 30°C to 50°C.
- It is coated with PE film inside, preventing from leaking and is easy to carry.

| Item    | Capacity      | Size(mm)      | Packing(ctn) |
|---------|---------------|---------------|--------------|
| KR1516B | 500ml / 16 oz | Φ150 x 47     | 600 pcs      |
| KR1524B | 750ml / 24oz  | Φ150 x 58     | 600 pcs      |
| KR1524B | 1000ml / 32oz | Φ150 x 75     | 600 pcs      |
| KR150F  | -             | Φ157.3 x 23.5 | 600 pcs      |
| KR150PF | -             | Φ154 x 12     | 600 pcs      |
| KR1624B | 750ml / 24oz  | Φ165 x 53     | 300 pcs      |
| KR1632B | 1000ml / 32oz | Φ165 x 65     | 300 pcs      |
| KR165F  | -             | Φ172.7 x 23.5 | 300 pcs      |
| KR165PF | -             | Φ169 x 12     | 300 pcs      |



 HARVEST GROUP



Office in China    Office in Taiwan





## Kraft Paper Food Box with Window

- The box can be completely opened and laid flat, so that it can effectively reduce transportation costs.

| Item   | Size(mm)   | Packing(ctn) |
|--------|------------|--------------|
| KCW-01 | 167*72*35  | 600 pcs      |
| KCW-02 | 190*120*45 | 400 pcs      |
| KCW-09 | 240*135*45 | 400 pcs      |
| PCW-05 | 172*116*45 | 400 pcs      |
| PCW-07 | 203*123*45 | 400 pcs      |
| PCW-09 | 224*131*45 | 400 pcs      |

## Kraft Paper Sushi Tray

- Our kraft paper to-go boxes are not only eco-friendly but also matching with your delicious food the most harmoniously.

| Item  | Size(mm)                            | Packing(ctn)       |
|-------|-------------------------------------|--------------------|
| PR-01 | Lid 160.5*83.5*30<br>Base 155*77*25 | 400 pcs<br>400 pcs |
| PR-02 | Lid 224*86*30<br>Base 215*77*25     | 400 pcs<br>400 pcs |
| PR-03 | Lid 159*114*30<br>Base 150*105*25   | 400 pcs<br>400 pcs |
| PR-05 | Lid 184*129*30<br>Base 175*120*25   | 400 pcs<br>400 pcs |
| PR-07 | Lid 214*137*30<br>Base 205*128*25   | 300 pcs<br>300 pcs |
| PR-09 | Lid 229*144*30<br>Base 220*135*25   | 300 pcs<br>300 pcs |





# rPET Packaging

Recycling PET helps decrease the amount of plastic wastes that enters landfills or the Ocean.

1



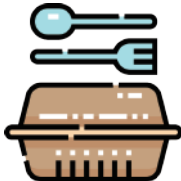
Post-consumer recycling

2



Processed into different products

3



rPET food container

4



100% Biodegradable



| Item  | Size(mm)     | Packing(ctn) |
|-------|--------------|--------------|
| HC-08 | 251*146*34.5 | 200 pcs      |
| HC-12 | 251*150*43.5 | 200 pcs      |
| HC-16 | 255*145*56.5 | 200 pcs      |
| HC-24 | 325*185*43.5 | 200 pcs      |
| HC-32 | 325*190*65   | 200 pcs      |

Any Questions?

View More Products!

 HARVEST GROUP




Office in China    Office in Taiwan



# rPET Clear Deli Container

- We have plastic hinged containers to fit every possible scenario from salad to cooked food, from delivery to to-go applications, and everything in between.



| Item    | Size(mm)   | Packing(ctn) |
|---------|------------|--------------|
| PT-6060 | 293*153*47 | 500 pcs      |
| PT-8080 | 419*213*45 | 240 pcs      |
| PT-8083 | 419*213*45 | 240 pcs      |
| PT-9090 | 474*223*45 | 240 pcs      |
| PT-9093 | 474*223*45 | 240 pcs      |

| Item    | Size(mm)                          | Packing(ctn) |
|---------|-----------------------------------|--------------|
| ES-750  | Lid 192*192*23<br>Base 191*191*46 | 300 sets     |
| ES-1000 | Lid 192*192*23<br>Base 191*191*56 | 300 sets     |
| ES-1500 | Lid 192*192*23<br>Base 191*191*88 | 300 sets     |



| Item  | Size(mm)                                  | Packing(ctn) |
|-------|---|--------------|
| HE1-4 | Lid 190*93*41<br>Base 192.5*95.5*15       | 300 sets     |
| HE1-5 | Lid 226.5*93.5*41<br>Base 228.5*95.5*15   | 300 sets     |
| HE2-4 | Lid 189.5*135.5*37<br>Base 192.5*138.5*15 | 300 sets     |
| HE2-5 | Lid 216*135.5*37<br>Base 218*138*15       | 300 sets     |



# rPET Salad Container

After recycling post-consumer recycled plastic bottles and containers, washing, processing, and granulating, then re-produce into new containers as a result for reducing plastic wastes and carbon footprints.



| Item   |      | Size(mm)   | Capacity |
|--------|------|------------|----------|
| RS1216 | Lid  | 124*124*15 | -        |
| RS-12  | Base | 122*122*50 | 12 oz    |
| RS-16  | Base | 122*122*65 | 16 oz    |
| RS2432 | Lid  | 155*155*17 | -        |
| RS-24  | Base | 157*157*64 | 24 oz    |
| RS-32  | Base | 157*157*84 | 32 oz    |



RS-12



RS-16



RS-24

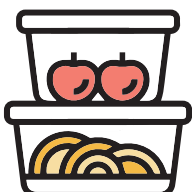


RS-32



## Highly Transparency

- Allow the food inside to be displayed clearly and stimulate the desire for consumption.



## Stackable

- Stackable design prevents slipping and falling during delivery.

 HARVEST GROUP



Office in China



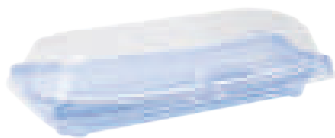
Office in Taiwan

# rPET Sushi Tray

RPET is a thermoformable material that, thanks to its usefulness and its low impact on the environment, is playing an increasingly important role in global circular economy strategies.



| Item  |      | Size(mm)         |
|-------|------|------------------|
| RT-02 | Lid  | 224.5*96*35.5    |
|       | Base | 221.5*93*29.5    |
| RT-03 | Lid  | 168.5*118.5*35.5 |
|       | Base | 165.5*115.5*29.5 |
| RT-05 | Lid  | 188.5*132*35.5   |
|       | Base | 185.5*129*29.5   |
| RT-07 | Lid  | 219*139*35.5     |
|       | Base | 216*136*29.5     |



RT-02



RT-03



RT-05



RT-07



## Anti-fog Lid

- Avoid fogging when being placed in the refrigerated display cabinet.



## Durability

- Sturdy construction prevents from collapsing when stacking on the shelf and delivery.



# Relocks PET Packaging

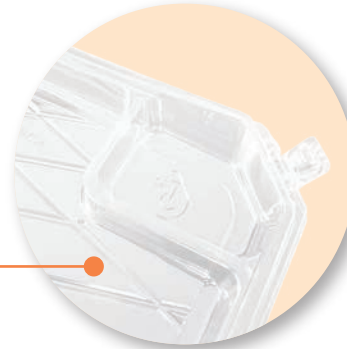
RELOCKS food container has become eye catching in the market for its innovative patented design.



RCR-01  
-Hinged Lid



RS20-02



1. It comes with a special design for wasabi/soy sauce.

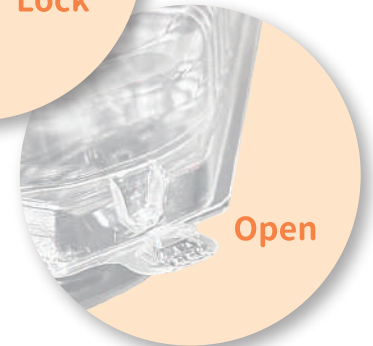


RS32-01  
RS50-02

| Item    | Capacity  |      | Size(mm)   | Packing(ctn) |
|---------|-----------|------|------------|--------------|
| RCR-01  | 13*9 inch |      | 465*320*88 | 600 pcs      |
| RS20-02 | 8*7 inch  | Lid  | 270*222*30 | 400 pcs      |
|         |           | Base | 270*222*25 | 400 pcs      |
| RS32-01 | 8 inch    | Lid  | 280*280*32 | 300 pcs      |
|         |           | Base | 280*280*30 | 300 pcs      |
| RS50-02 | 11 inch   | Lid  | 360*360*30 | 300 pcs      |
|         |           | Base | 360*360*30 | 300 pcs      |



Lock



Open

2. Easy open & Lock



Reliable



- ✓ Durable
- ✓ Reliable
- ✓ Safety

This broke the limits of traditional vacuum forming techniques with **Reliable, Reuse** and **Relax** characteristics to bring convenient, and eco-friendly products to consumers.

# Relocks PP Packaging



Easy open & Lock



| Item    | Capacity      | Size(mm) | Packing(ctn) |
|---------|---------------|----------|--------------|
| RBC-02F | -             | Φ180*19  | 600 pcs      |
| RBC-02M | 400ml / 13oz  | Φ167*35  | 600 pcs      |
| RBC-04M | 650ml / 22oz  | Φ167*56  | 600 pcs      |
| RBC-02B | 900ml / 30oz  | Φ176*75  | 300 sets     |
| RBC-03B | 1200ml / 40oz | Φ176*92  | 300 sets     |
| RBC-04B | 1500ml / 50oz | Φ176*115 | 300 sets     |

More Product Information

 HARVEST GROUP



Office in China Office in Taiwan

Any Questions?



# Advantages of CPET Material

C-PET is made of a more ordered crystal structure of PET molecules, resulting in a sustainable, wide range temperature resistance, and recyclable product.



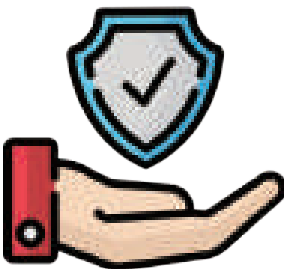
## Recyclable

- C-PET is recyclable and can be melted down to make new products, reducing plastic waste and helping protect the planet and the environment.



## Safety

- It is non-toxic and Bisphenol A (BPA) and phthalates free, so no need to worry about harmful chemicals leaching.



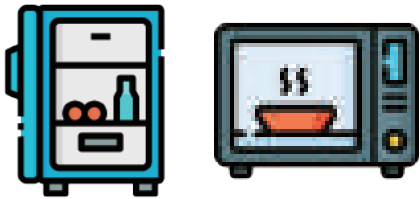
## Secure Handling

- Our CPET products are designed with smooth rims so that they surely can be handled safely while used.



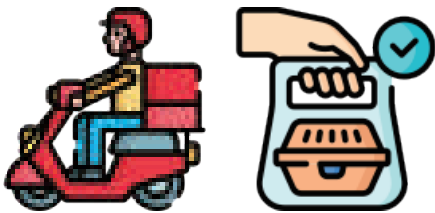
# Why Choose CPET

C-PET containers are high barrier properties, ovenable, frozenable, durable, and recyclable.



## Wide Range Temperature Resistance

- CPET is freezer, microwave and conventional oven safe from -4°F to 400°F.



## Durability

- With good impact resistance, it is very suitable for food delivery and take out service.



## Frozen Safe

- CPET material is still flexible after being refrigerated and frozen, it effectively keeps fresh during the shelf life.



## Versatility

- It can be molded into a variety of shapes and sizes, making it a versatile material for food packaging.

More Product Information

Any Questions?

 HARVEST GROUP



Office in China



Office in Taiwan